



BUILDING INFRASTRUCTURE
FOR EARTH'S WATER SECURITY

Q4 FY 2025-2026
FY 2025-2026 Performance Report



From The Desk Of The Chairman



**Mr. Ranchhod
Kakadiya**

Founder & Chairman

Dear Shareholders,

It gives me great pleasure to present the journey of Eiffil Water Infra Limited ("EWIL") up to FY25-26. Despite industry shifts, we stayed committed to advancing our expertise in Water, Drainage, and Irrigation systems.

"I came to Ahmedabad from a small village with a dream. Through hope, hard work, and the support of the EWIL family, we have turned those dreams into a reality where no goal remains incomplete."

Our Shared Vision & Goal

To be the first choice for water and energy security, ensuring India's leading role in world-class infrastructure.

Credo: "Work with your head down, and let the work speak."

"Together we can, and together we will."

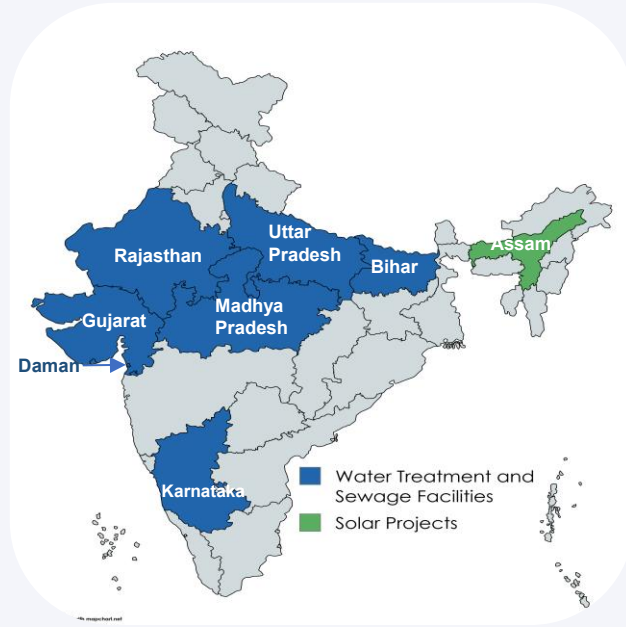
Thank you for your support. Jai Hind. Jai Bharat.

₹ 5,896.88 Mn
TOTAL REVENUES

14.73 %
EBITDA MARGIN

9.17 %
PAT MARGIN

Business Snapshot



27

Years In Business

₹ 23,220 Mn

Order Value Executed

₹ 21,964 Mn

Order Book Value

8

Geographical Regions

200+

Completed Projects

₹ 5863.17 Mn

FY26 Operating Revenue

450+

Team Size

240+

Certified Engineers

₹ 897.24 Mn

FY26 EBITDA

Capabilities Across High-Growth Infrastructure Sectors



Water Supply



Irrigation



Treatment
Plants



Sewerage



Canal



Road



Urban Infra

**5,000+ KM
Pipeline Laid**

**1,58,730+ House
Connections**

Core Strengths

- Strong Presence Across 8 States
- Expertise in Water & Urban Infrastructure Proven
- Execution Across Large-Scale EPC Projects
- Focused on Sustainable Infrastructure Development

Growth & Execution Highlights

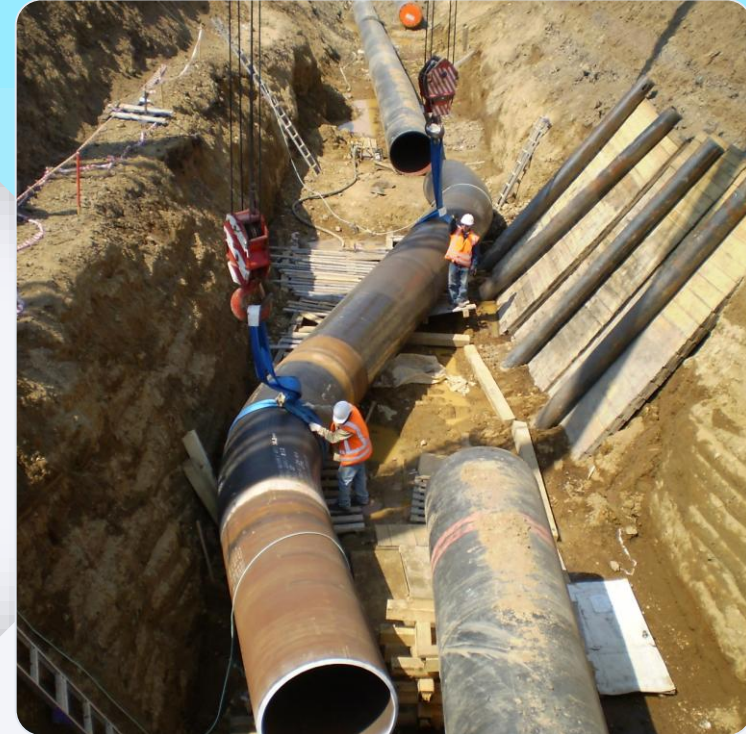
- Robust Order Book Ensuring Revenue Visibility
- 200+ Successfully Completed Projects
- Skilled Workforce with 240+ Certified Engineers
- Backed by 27 Years of Industry Experience

Eiffil Water Infra Limited - Profile



Eiffil Water Infra Limited established in 1998, has emerged as a leading force in Designing, Construction, Commissioning, and Operation & Maintenance, with a particular emphasis on **Water, Drainage, and Irrigation systems**. Based in Ahmedabad, Gujarat, EWIL is strategically situated to meet the diverse infrastructure needs of the region's Water Supply and Wastewater Systems.

EWIL is recognized for its **"AA" Class** registration with Gujarat's R&B Division, valid across India for bidding on tenders of any amount. Additionally, it is registered in **Civil Class-1** for PWD, Karnataka state, underscoring its commitment to excellence.



Guiding Principles



Our Vision

We will bring to you a culture that nurtures performance, integrity and client satisfaction. We are professional in providing excellent construction solutions throughout the country. At our company our employees will look forward to being creative and empowered, turning their ideas into reality for the client. We will inculcate a culture of learning through experience, alongside meeting the expectation of our employees, clients and society.

Our Mission

To be the leader in the highest quality of construction services carried out in a fair manner. To realize the importance of all human resources that are necessary for the business and hence ensuring client and employee satisfaction, by empowering both of them. To create something new and useful for the country and society.



Construction Verticals



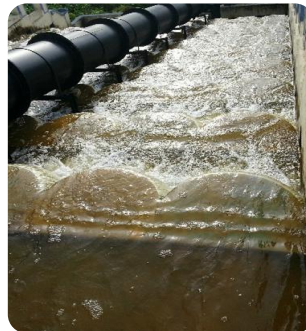
Sewage System

Design, construction, and maintenance of efficient sewage disposal systems, ensuring sustainable waste management and environmental protection.



Canal Works

Construction of canal works, delivering sustainable water management solutions for efficient irrigation and flood control systems



Water Supply System

Designing and constructing reliable water supply systems, ensuring communities have access to clean and sustainable water solutions



Treatment Plants

Constructing advanced water treatment plants, providing innovative solutions for purifying water and ensuring a sustainable and clean water supply



Road Projects

Road restoration works undertaken as part of integrated sewerage network development projects.



Solar Projects

Entry into Solar EPC business marks a strategic step toward becoming a multi-sector sustainable infrastructure company.

Potable Water Supply Projects

Water supply projects are vital for ensuring reliable access to clean and safe drinking water, focusing on enhancing infrastructure for water sourcing, purification, storage, and distribution to meet the needs of communities.

These initiatives aim to improve public health, support sustainable development, and safeguard water resources for future generations.

Water Sourcing



Sourcing surface water from rivers, lakes, and reservoirs, groundwater from wells and boreholes, even rainwater harvesting etc, which is often utilized in rural or drought-prone areas

Water Treatment



Water from natural sources undergoes treatment. After chlorination to remove bacteria, it is stored in reservoirs and pumped to Elevated Storage Reservoirs (ESR) for distribution to homes

Desalination Plants



Cities located nearby Coastal Area, the Desalination Plants are used to convert Sea Water or Brackish Water into drinking water

Operating Model



Conventional Contracting

Delivering end-to-end conventional water supply and treatment solutions, from design to execution.

Our expertise ensures efficient and sustainable water management systems for communities and industries alike.



Turnkey EPC Project

Offering fully integrated services from project planning and design to execution and commissioning.

Our holistic approach ensures timely delivery of efficient and sustainable water management systems.

Leadership Team



Mr. Ranchhod Kakdiya
Founder & Managing Director
26 Years of Experience

Seasoned infrastructure entrepreneur. Key role in scaling execution capabilities and building long-term institutional relationships.



Mr. Nirav Patel
Director & CEO
15 Years

Leads business operations and strategic growth with strong expertise in infrastructure management.



CA Jaynam Shah
Director & CFO
8 Years

Expert in corporate finance, financial controls, and strengthening financial governance.



Mr. Haresh Vaddoriya
Director
15 Years

Focuses on operational management and project coordination within the infrastructure sector.



Mr. Jayanti Savsaviya
Director
15 Years

Extensive experience in project supervision and supporting timely delivery of projects.



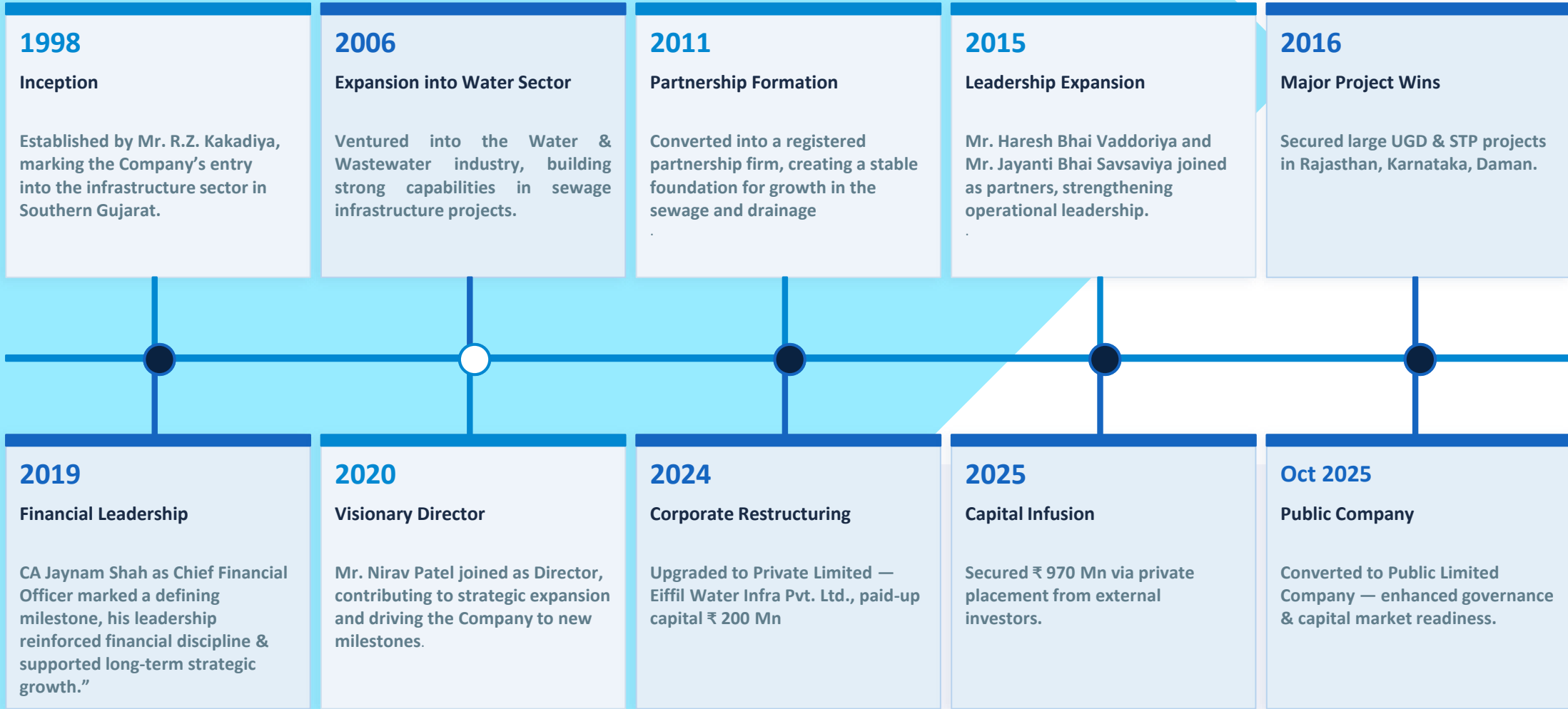
Mr. Ajay Shah
Technical Head
45 Years

Provides engineering leadership and strategic execution oversight across complex developments.



Mr. Neel Kakdiya
Director
Finance Prof.

Contributing towards finance management with a dynamic and growth-oriented approach.





BUILDING INFRASTRUCTURE
FOR EARTH'S WATER SECURITY

FINANCIAL OVERVIEW FY 2025-2026



Analysis Of Operating Revenues

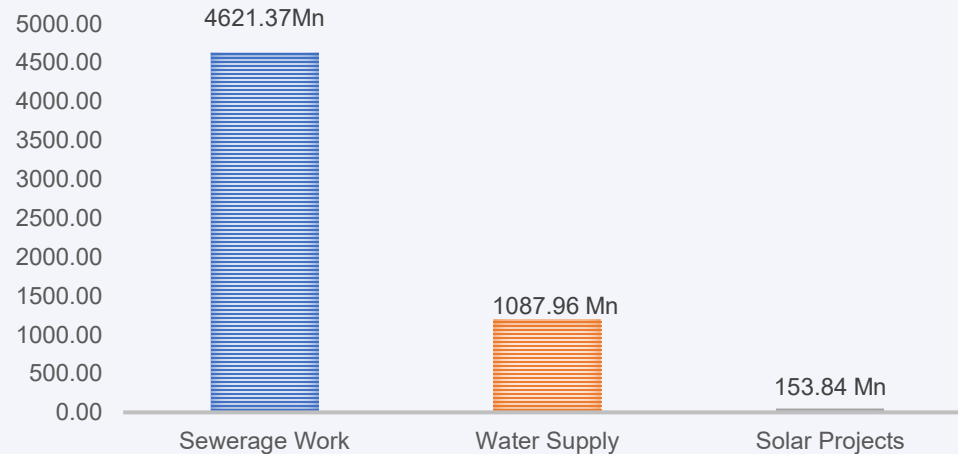


Sewerage Infrastructure vs. Water Supply · FY 2025–26 · ₹. in Mn

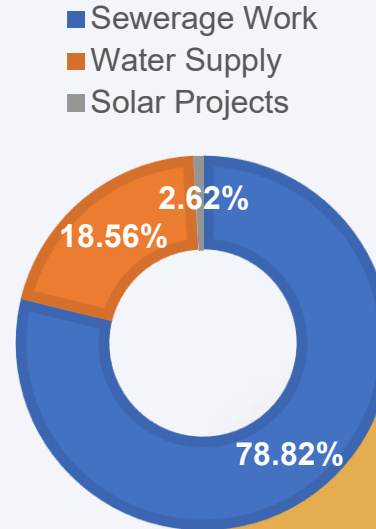
TOTAL TAXABLE SALES — FY 2025–26
₹ 5,863.17 Mn

Sewerage: ₹ 4,621.37 Mn | Water Supply: ₹1,087.96 Mn | Solar EPC
 ₹153.84 Mn

Revenue Contribution by Segment (₹ Mn)



Revenue Split (%)



Segment Summary

Segment	Sales (Mn)	Share
Sewerage Work	₹ 4,621.37	78.82%
Water Supply	₹ 1,087.96	18.56%
Solar EPC Projects	₹ 153.84	2.62%
Total Sales	₹ 5,863.17	100%

*** Solar EPC Energy**

New vertical entering pilot-to-strategic phase in FY 2025–26

Geographical Revenue Footprint



FY 2025-26

REVENUE VOLUME COMPARISON



- Uttar Pradesh (52.4%)
- Madhya Pradesh (23.3%)
- Gujarat (17.9%)
- Karnataka (3.6%)
- Rajasthan (1.8%)
- Assam (0.8%)
- Daman (0.1%)

KEY INVESTMENT HIGHLIGHTS

- UP dominates with 52.4% of total revenue — strongest single-market position.
- Top 3 states deliver 94.4% of total sales — scalable, high-density core markets.
- ₹374 Mn from 4 emerging states signals strong expansion runway.
- 7-state pan-India presence across North, Central & West reduces regional risk.

94.4%

Top-3 State Share

UP + MP + Gujarat

7 States

Geographic Coverage

North · Central · West India

Strategy & Diversification Roadmap



Revenue Composition, Growth FY 2025–26

Core Revenue Engine — Sewerage Infrastructure

01

Sewerage Infrastructure remains the cornerstone of EWIL revenue model, contributing ₹4,621.37 Mn — representing of total FY26 revenues. This dominant segment reflects the company's deep domain expertise, established government relationships, and proven execution track record in large-scale municipal and urban water infrastructure projects across the region.

Growing Segment — Water Supply & Utility Infrastructure

02

The Water Supply vertical contributed ₹1,087.96 Mn in FY26 and is strategically transitioning from conventional project execution toward integrated utility infrastructure solutions. This evolution positions the company to capture higher-value, longer-duration contracts and recurring revenue opportunities within the municipal utility space.

Emerging Vertical — Solar EPC Energy & ESG Diversification

03

As part of its long-term diversification strategy, EWIL is entering the Solar EPC Energy sector — transitioning from a pilot initiative to a strategic business contributor amounting to ₹. 153.84 Mn during FY26. This vertical is expected to strengthen the company's ESG positioning, reduce dependency on current segments, and create sustainable new revenue streams aligned with India's renewable energy mission.

EWIL diversified project portfolio — anchored in Sewerage Infrastructure and expanding into Water Supply & Solar EPC Energy — positions the company for sustainable, multi-segment growth over the coming years.

Investment Highlights & Financial Strengths



Net Worth Appreciation

Net worth surged from 601.41 Mn in FY24 to **2,340.95 Mn** in FY26.

Scalable Asset Growth

Balance sheet grew from 2,243.54 Mn to **7,299.26 Mn** in two years.

Sectoral Growth

Well-positioned to benefit from government focus on water infrastructure.

Balance Sheet

Net worth strengthened via reserve accretion, supporting long-term stability.

Fiscal Responsibility

Current Tax Liabilities reached **851.04 Mn** indicating taxable profitability.

Strengthening Capital Base

Shift from Director Loans to Fresh **capital infusion** to enhance financial flexibility

Project Capacity

Current Assets at **5,485.52 Mn** support large-scale infrastructure projects.

Clean Audit Trail

Consistency between audited figures and provisional estimates.

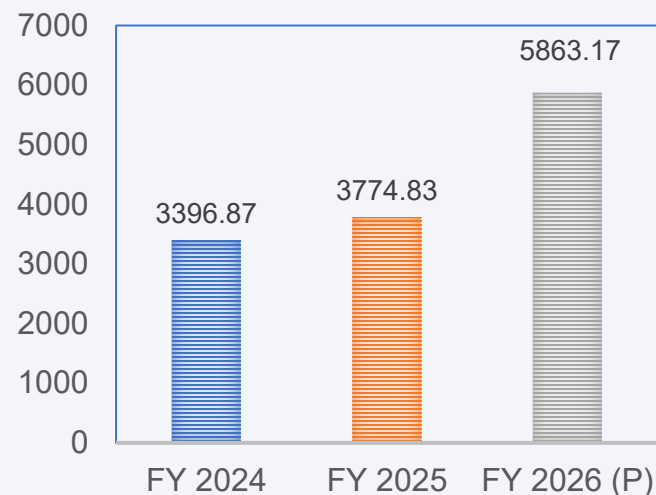
Three-year Financial Summary



Revenue · EBITDA · PAT · Margins

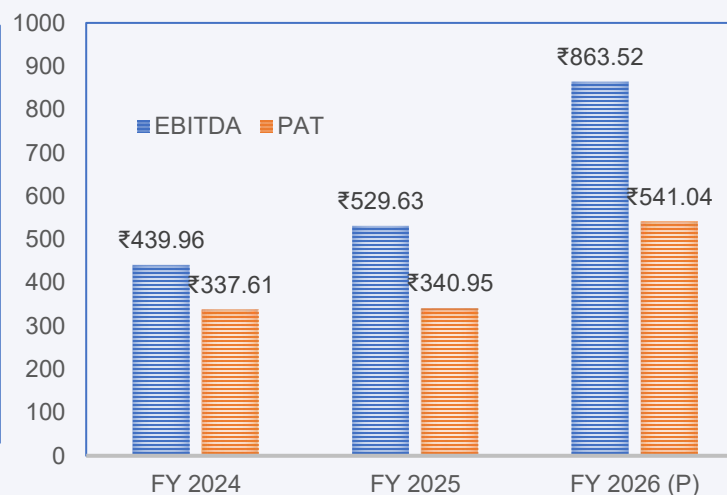
Financial Year	Operating Revenue	EBITDA	PAT	EBITDA Margin	PAT Margin
FY 2024	₹3396.87 Mn	₹439.96 Mn	₹337.61 Mn	12.95 %	9.88 %
FY 2025	₹3774.83 Mn	₹529.63 Mn	₹340.95 Mn	14.03 %	8.99 %
FY 2026 (P)	₹5863.17 Mn	₹863.52 Mn	₹541.04 Mn	14.73 %	9.17 %

Revenue from Operations (₹ Mn)



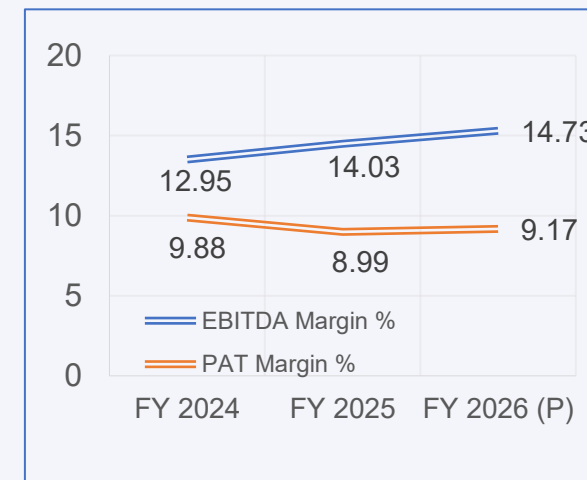
Revenue grew 72.6% in 3 years — ₹3396.87 Mn → ₹5863.14 Mn

EBITDA & PAT Comparison (₹ Mn)



EBITDA: ₹439.96 → ₹863.52 Mn | PAT: ₹337.61 Mn → ₹541.04 Mn

EBITDA & PAT Margin Trend (%)



Margins stable — EBITDA consistently above 12.5%

Key Financial Ratios



Balance Sheet Strength · ₹. in Mn · FY 2024 – FY 2026

NET WORTH

(₹. in Mn)

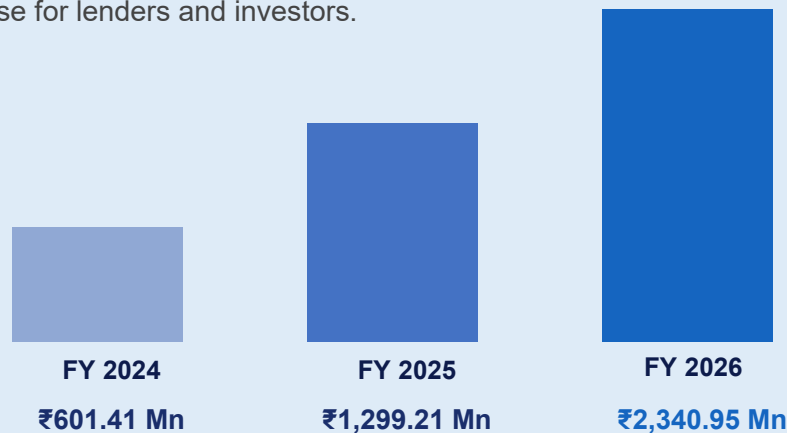
Net worth grew 3.88x in 3 years — from ₹601.41 Mn to ₹2,340.95 Mn

Base Year

+116% YoY

+80% YoY

Strong net worth growth reflects consistent retained earnings, equity infusion, and a robust balance sheet that provides a solid security base for lenders and investors.



DEBT / EQUITY RATIO

Times

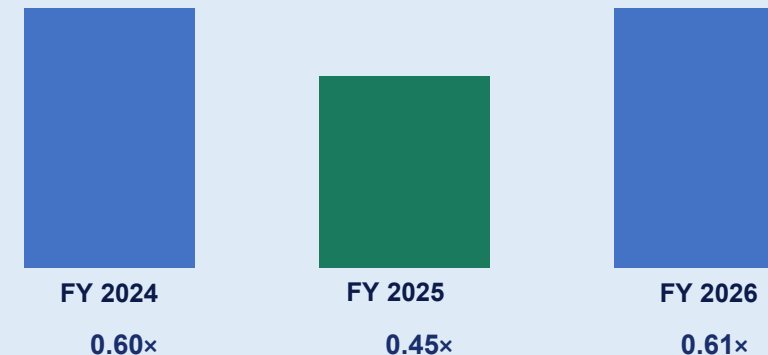
D/E ratio below 1.0x in all years — company is not over-leveraged

Controlled

Best Level

Growth Phase

A D/E ratio consistently below 1.0x demonstrates that the company's growth is largely equity-funded. The dip to 0.44x in FY25 — the strongest level — confirms disciplined debt management.



Eiffil Water Infra Limited · All figures in ₹. Mn · FY 2026 figures are Provisional

Note : Net Worth is net of Misc. Expenditure not written off

Key Investor Takeaways



01 Rapid & Sustainable Revenue Growth

Revenue has grown at a CAGR of ~31% over 3 years — from ₹3396.87 Mn to ₹5863.17 Mn — demonstrating strong market demand and execution capability

02 Consistent Profitability — Not a One-Year Story

The company has delivered positive EBITDA and PAT across all three years. Profit is not seasonal or one-off — it reflects a fundamentally profitable business model.

03 Margin Stability Signals Operational Discipline

EBITDA margins held steady between 12.95% and 14.73% while revenue nearly doubled — proving that management controls costs effectively even during high growth phases.

04 Strong Capacity to Service Debt

With EBITDA of ₹863.52 Mn in FY26 (P) and consistent profit generation, the company demonstrates ample cash flow coverage for loan repayments and interest obligations.

The company has maintained double-digit operating profitability margins across all three years, reflecting strong operational efficiency and disciplined cost management.

Consolidated Debt Profile

Total Sanctioned vs Outstanding Debt (₹ Mn)



₹361.00 Mn

Term Loan

O/S: ₹357.33 Mn

₹830.00Mn

Banking Facilities

O/S: ₹827.99 Mn

₹397.50 Mn

PID Facility

O/S: ₹396.44 Mn

₹270.00 Mn

Trade Facility

O/S: ₹266.55 Mn

FY 2024–25

Instrument	Total Debt (₹ Mn)	O/S Debt (₹ Mn)
Term Loan	64.80	4.04
Banking Facilities	125.00	124.93
PID Facility	100.00	99.94
Trade Facility	0.00	0.00
Total	289.80	228.90

FY 2025–26

Instrument	Total Debt (₹ Mn)	O/S Debt (₹ Mn)
Term Loan	361.00	357.33
Banking Facilities	830.00	827.99
PID Facility	397.50	396.44
Trade Facility	270.00	266.55
Total	1,858.50	1,848.31

Working Capital Movement

FY 2024–25 to FY 2025–26 (₹ Mn)

₹5,485.52 Mn

Current Assets FY26

vs ₹3,534.79 Mn in FY25

+₹1,950.73 Mn

Change in Current Assets

+55.19% YoY Growth

₹4,769.73 Mn

Current Liabilities FY26

vs ₹2,812.17 Mn in FY25

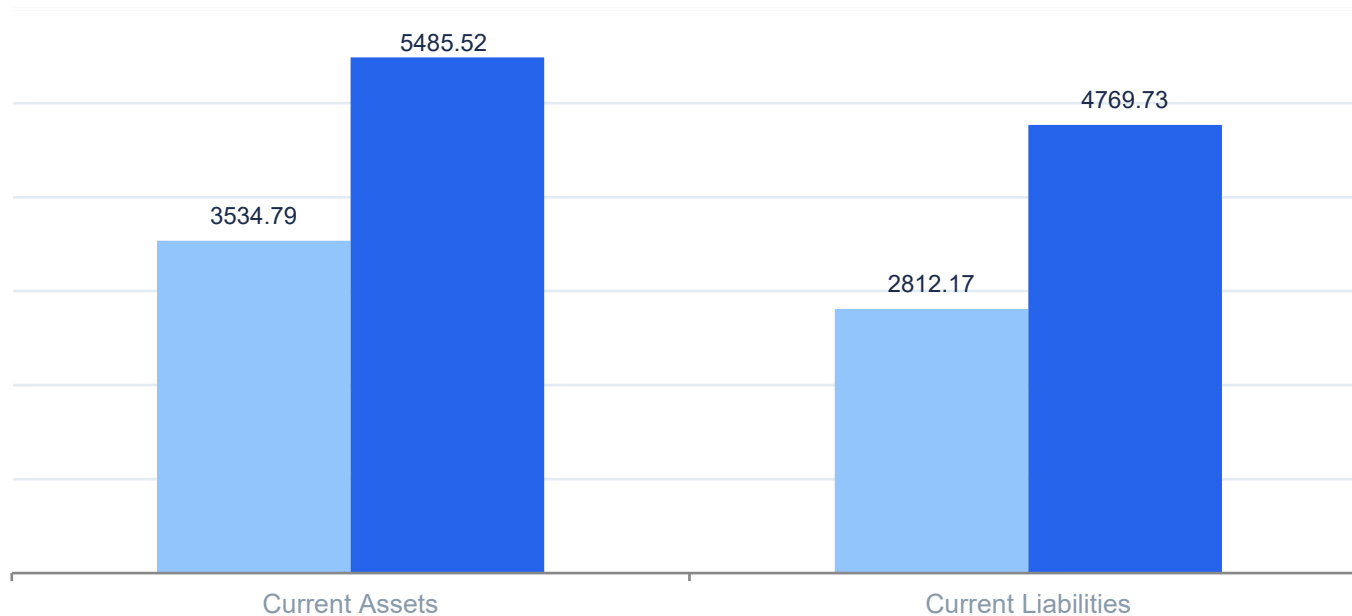
+₹1,957.56 Mn

Change in Curr. Liabilities

+69.61% YoY Growth

CURRENT ASSETS vs CURRENT LIABILITIES (₹ Mn)

■ FY 2024–25 ■ FY 2025–26



KEY HIGHLIGHTS

- Current assets grew 55.19% YoY to ₹5,485.52 Mn, driven by higher inventory & receivables from scale-up.
- Current liabilities rose 69.61% YoY to ₹4,769.73 Mn, reflecting increased trade payables & short-term borrowings.
- Working capital gap narrowed as revenue recognition aligned with project execution under direct model.
- Net working capital: ₹715.79 Mn (FY26) vs ₹722.62 Mn (FY25) — near stable despite significant scale-up.

Business Model Transition & Revenue Growth

Strategic Shift: JV/Sub-contracting → Integrated Execution



₹ 3774.83 Mn

Revenue FY 2024–25

JV/Sub-contracting model

₹5863.17 Mn

Revenue FY 2025–26

Integrated execution model

+55.32%

Revenue Growth YoY

Material & BG now in-house

EXECUTION MODEL COMPARISON

FY 2024–25 (Old Model)

- Projects via JV / sub-contracting
- Material procurement by main contractor
- BG issued in contractor's name
- Revenue partially off-book
- Lower reported turnover

FY 2025–26 (New Model)

- Direct integrated project execution
- All material procured by Eiffil water infra ltd.
- BG issued in Eiffil water infra ltd. name
- Full revenue recognised in books
- Higher reported turnover

IMPACT ON FINANCIALS

- 01 Revenue Recognition**
Full project revenues now in 's books — reported turnover jumped 55.32% YoY to ₹5863.17 Mn.
- 02 Working Capital Rise**
Higher inventory & receivables due to direct material procurement and larger project scale.
- 03 Debt Scale-Up**
Total debt grew 6.41x to ₹1,858.50 Mn to fund working capital, BGs, and growth investments.
- 04 Stronger Balance Sheet**
Direct execution model improves revenue visibility & strengthens lender confidence.

Return Ratios · ROCE & ROE



Operational Efficiency & Shareholder Returns · FY 2024 – FY 2026

ROCE and ROE have remained exceptionally strong — consistently above 23% across all three years. While returns have moderated as the equity base expanded significantly, they remain well above industry benchmarks.

Financial Year	ROCE (%)	ROE (%)	Interpretation
FY 2024	40.97%	56.14%	Peak returns — lean equity base amplifying profitability impact
FY 2025	35.24%	26.24%	Returns moderate as net worth doubles — healthy normalisation
FY 2026 (P)	34.42%	23.11%	Returns stabilise above 23% — sustainable high-return business model

Above 34% ROCE

In FY26, for every ₹100 of total capital deployed, the company earned ₹34.51 in operating profit — far exceeding the cost of capital.

Above 23% ROE

Even with net worth growing to ₹2,330.42 Mn, the company still delivers ₹23.22 return for every ₹100 of equity — strong shareholder value.

Equity Growing

Net worth grew from ₹601 Mn to ₹2,330 Mn (+287%) — the moderation in % returns is entirely due to the growing equity base, not declining profits.

Consistent Track Record

Three consecutive years of ROCE above 34% and ROE above 23% proves this is a structurally profitable business, not a one-time result.



BUILDING INFRASTRUCTURE
FOR EARTH'S WATER SECURITY

PROJECTS AND
ORDER BOOK SUMMARY



Order Book Dashboard



FY 25-26 Current Order Book Overview & Success Ratio

TOTAL BID AMOUNT
₹64,474 Mn

Awarded Contract
₹13,530 Mn

CURRENT ORDER BOOK
₹ 21,964 Mn

SUCCESS RATIO
20.99 %

TOP AWARDED (FY 25-26)

Sasaram	₹3,659.30 Mn
Kanpur	₹3,152.40 Mn
Buxar	₹2,040.20 Mn
Mandsaur	₹1,468.10 Mn
AUDA	₹1,095.50 Mn

TOP CURRENT ORDERS

Gorakhpur- Zone C	₹3,466.40 Mn
Gorakhpur- Gordhoiya Nala	₹3,241.20 Mn
Bhopal	₹2,842.00 Mn
Jabalpur	₹2,644.90 Mn
Agra - Ghaziabad	₹1,810.80 Mn
Shahdol	₹1,726.10 Mn
Rishabhdev	₹962.40 Mn
Khajuraho	₹935.90 Mn
Surendranagar	₹560.70 Mn

Strategic Market Expansion & Operational Excellence



Robust Order Pipeline

Total order book value of **₹21,964 Mn**, with **28 active projects**.

Proven Execution Capability

Delivered **51 projects** worth **₹23,220 Mn**, establishing a credible track record.

Pan-India Footprint

Strategic presence in **8 states**; strong penetration in UP and MP

High-Value Bid Success

Achieved **20.99% success ratio** on total bid volume of ₹64,474 Mn.

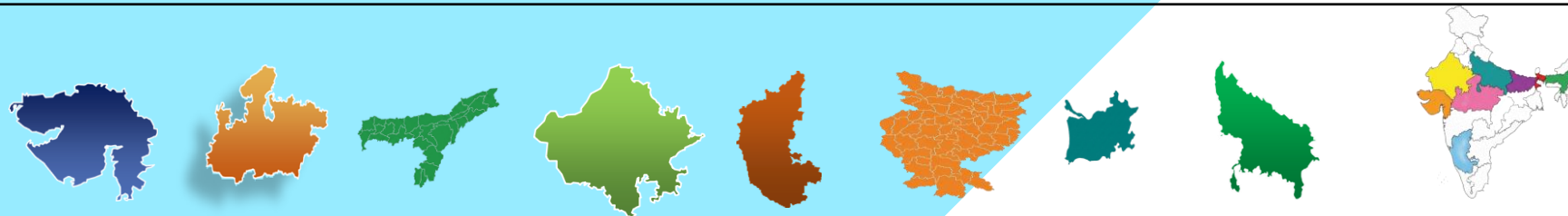
Key Growth Drivers

Recent contract awards in **Sasaram of ₹3,659.30 Mn** and **Kanpur of ₹3,152.40 Mn** underscore municipal project success.

Order Book Analysis



Sales order book analysis: Diversified presence across 8 states with total order book value of INR 21,964 Mn.



Particular	Gujarat	Madhya Pradesh	Assam	Rajasthan	Karnataka	Bihar	Daman	Uttar Pradesh	Total
No. of Projects Completed	24	1	-	7	8	-	-	11	51
No. of Projects Work in progress	11	5	1	2	2	2	1	4	28
Value of Completed Projects (Mn)	₹ 2,960	₹ 330	-	₹ 9,180	₹ 5,570	-	-	₹ 5,180	₹ 23,220
Value of Projects in Progress (Mn)	₹ 1,792	₹ 7,595	₹ 885	₹ 959	₹ 72	₹ 5,699	₹ 22	₹ 4,939	₹ 21,964

Executive Summary: Strategic Developments



FY 2025–26 · Investor Update

Operational Growth

Expanding footprint

- **Solar EPC I — Assam:** Project currently in active execution phase, advancing our renewable energy presence.
- **Order Book:** Secured high-value government tenders and water supply contracts, driving strong infrastructure pipeline growth.

Governance & Compliance

Oversight & accountability

- **Statutory Audit:** Manubhai & Shah LLP formally appointed for independent oversight.
- **Internal Audit:** Formalised appointments to strengthen risk controls.
- **CSR Framework:** Programme currently in structured planning phase.

Financial Systems

Controls & investor readiness

- **ERP Deployment:** Advanced modules live for streamlined RA Bill management and automated reporting.
- **Audit Trails:** Strengthened infrastructure to support ongoing capital-raising phase.

"Building India's sustainable infrastructure — one project, one milestone at a time."



BUILDING INFRASTRUCTURE
FOR EARTH'S WATER SECURITY

FINANCIAL STATEMENTS FY 2025-2026



Profit and Loss Account – Quarterly (₹. In Mn)



Particulars	Q4 FY26*	Q4 FY25	YoY change
Revenue From Operations	3,676.81	1,907.79	92.73%
Other Income	29.48	11.23	162.51%
Total Revenue	3,706.28	1,919.01	93.14%
Material & Subcontracting Cost	2,867.08	1,397.23	105.20%
Direct Expenses	143.60	115.85	23.95%
Employee Benefit Expenses	38.42	24.48	56.94%
Other Expenses	13.85	53.58	-74.15%
EBITDA	613.86	316.65	93.86%
EBITDA Margin (%)	16.70%	16.60%	0.59%
Depreciation and Amortization	16.84	3.66	360.11%
Finance Cost	54.66	13.76	297.24%
Profit before Extraordinary Item & Tax	571.84	310.46	84.19%
Less : Extraordinary Item	9.77	9.77	0.00%
Profit before Tax	562.07	300.69	86.93%
Less: Tax Expense	114.30	64.77	76.47%
Profit after Tax(PAT)	447.77	235.92	89.80%
PAT Margin (%)	12.08%	12.29%	-1.73%
Basic EPS (₹.)	18.65	33.18	-43.79%

* FY 2026 data Provisional and Unaudited

Statement of Financial Position Balance Sheet



(₹. In Mn)

Equity & Liabilities	31-Mar-26 (Provisional)	31-Mar-25 (Audited)	31-Mar-24 (Audited)
Share Capital	246.76	230.40	263.80
Reserves & Surplus	2,113.74	1,098.12	337.61
Share Application Money pending allotment	0.00	67.62	-
Shareholders Funds	<u>2,360.50</u>	<u>1,396.15</u>	<u>601.41</u>
Loan from Directors	233.58	459.16	-
Long term Borrowings	40.66	2.16	200.09
Other Financial Liabilities	128.36	115.16	304.33
Non-Current Liabilities	<u>402.61</u>	<u>576.48</u>	<u>504.42</u>
Short-term Borrowings	1,144.66	126.81	162.03
Trade Payable	2,334.93	1,537.30	849.62
Provisions	205.53	43.65	63.28
Current Tax Liabilities (Net)	851.04	645.26	62.78
Total Current Liabilities	<u>4,536.15</u>	<u>2,353.02</u>	<u>1,137.71</u>
Total Equity & Liabilities	7,299.26	4,325.65	2,243.54

Assets	31-Mar-26 (Provisional)	31-Mar-25 (Audited)	31-Mar-24 (Audited)
Property, plant & Equipment	85.19	90.29	91.33
Non-Current Investments	72.87	11.36	2.98
Deferred Tax Asset (Net)	0.76	0.16	0.00
Other non-current Assets	1,654.92	689.06	0.00
Non-Current Assets	<u>1,813.74</u>	<u>790.87</u>	<u>94.31</u>
Inventories	1,266.83	807.05	423.72
Trade Receivables (Excl. Retentions)	2,996.82	1,568.20	587.26
Retentions with Government Dept.	0.00		655.44
Cash and cash equivalents	53.40	247.55	116.90
Short-Term Loans and Advances	314.93	134.48	192.40
Other current Assets	853.55	777.50	173.50
Total Current Assets	<u>5,485.52</u>	<u>3,534.78</u>	<u>2,149.22</u>
Total Assets	7,299.26	4,325.65	2,243.54

Statement of Profit & Loss (Annual)



(₹ Mn)					
Particulars	Unaudited FY26 (Mar-26)	YoY Growth FY26 vs FY25	Audited FY25 (Mar- 25)	YoY Growth FY25 vs FY24	Audited FY24 (Mar- 24)
Revenue from Operations	5,863.17	55.32%	3,774.83	11.13%	3,396.87
Other Income	33.71	96.08%	17.19	(9.71%)	19.04
Total Income	5,896.88	55.51%	3,792.03	11.01%	3,415.91
Purchase Cost	4,352.77	57.51%	2,763.44	7.95%	2,559.90
Employees Cost	145.72	104.29%	71.33	22.91%	58.03
Direct Expenses	447.90	36.53%	328.06	6.57%	307.84
Indirect Expenses	53.26	(35.34%)	82.37	164.52%	31.14
Total Expense	4,999.65	54.06%	3,245.20	9.75%	2,956.91
EBITDA	863.52	63.04%	529.63	20.38%	439.96
<i>EBITDA (%)</i>	<i>14.73%</i>	<i>0.70%</i>	<i>14.03%</i>	<i>1.08%</i>	<i>12.95%</i>
Finance Cost	140.01	166.18%	52.60	(0.66%)	52.95
Depreciation & Amortisation	16.84	360.24%	3.66	(38.35%)	5.94
Profit before Extraordinary Item & Tax	740.38	50.92%	490.57	22.61%	400.11
Less : Extraordinary Item	9.77	0.00%	9.77	-	0.00
Profit before Tax	730.61	51.96%	480.80	20.17%	400.11
Less: Tax Expense	189.57	35.56%	139.85	123.75%	62.50
Profit after Tax(PAT)	541.04	58.68%	340.95	0.99%	337.61
<i>PAT Margin</i>	<i>9.17%</i>	<i>0.18%</i>	<i>8.99%</i>	<i>(0.89%)</i>	<i>9.88%</i>

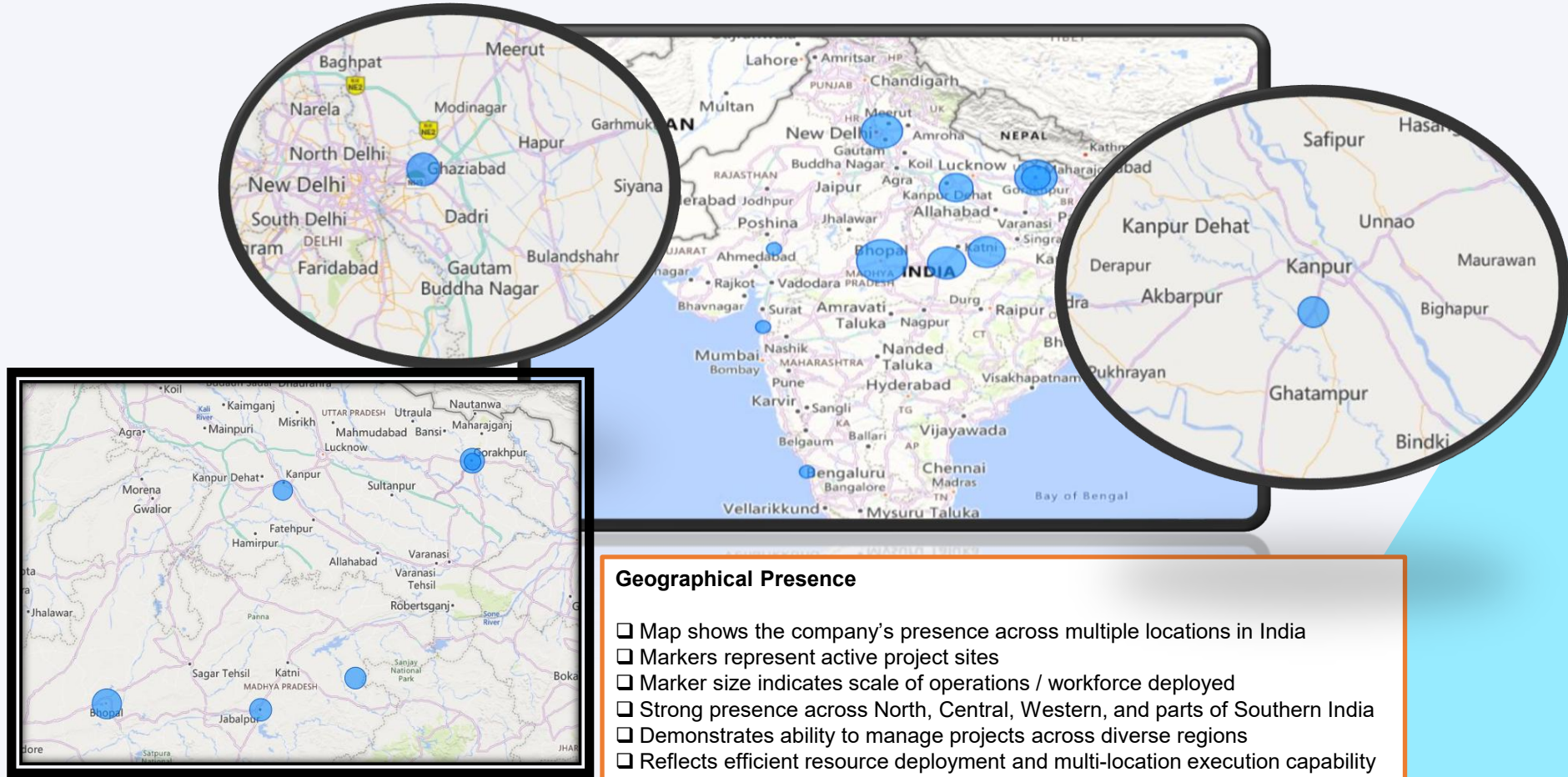


BUILDING INFRASTRUCTURE
FOR EARTH'S WATER SECURITY

HUMAN
RESOURCES



Pan-India Project Presence

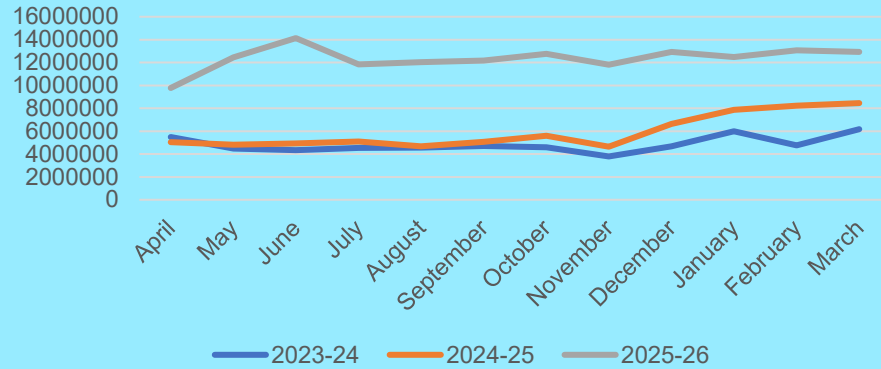


Geographical Presence

- ❑ Map shows the company's presence across multiple locations in India
- ❑ Markers represent active project sites
- ❑ Marker size indicates scale of operations / workforce deployed
- ❑ Strong presence across North, Central, Western, and parts of Southern India
- ❑ Demonstrates ability to manage projects across diverse regions
- ❑ Reflects efficient resource deployment and multi-location execution capability
- ❑ Indicates organizational growth and expanding operational footprint

This widespread presence highlights the company's strength in executing projects across multiple geographies simultaneously

Monthly Salary Trend Analysis



Monthly Salary Trend Analysis

- ❑ Shows monthly salary payout trend for last 3 years
- ❑ Strong growth in FY 2025–26 compared to previous years
- ❑ Increase driven by higher employee count and business expansion
- ❑ Reflects salary revisions and structured compensation practices
- ❑ Minor monthly variations due to hiring cycles and payout adjustments
- ❑ Overall trend indicates organizational growth and increased HR investment

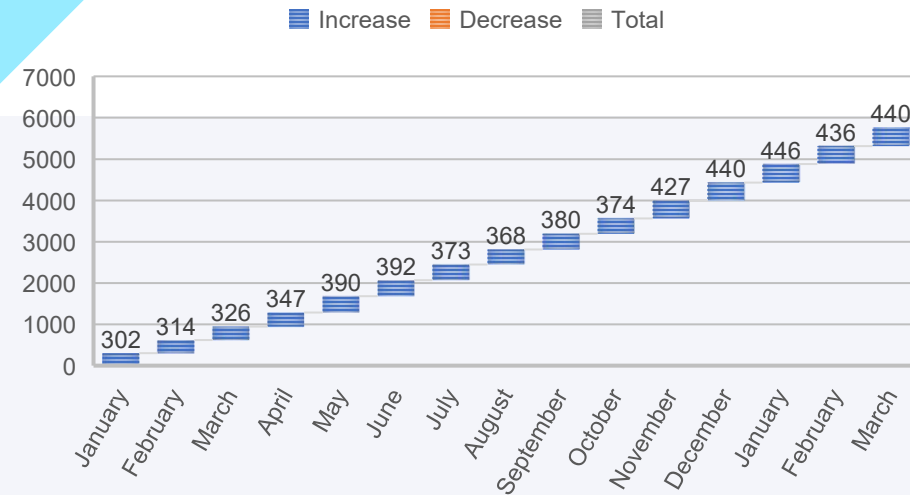
Overall, the trend highlights strong business growth and continuous investment in workforce

Monthly Employee Count

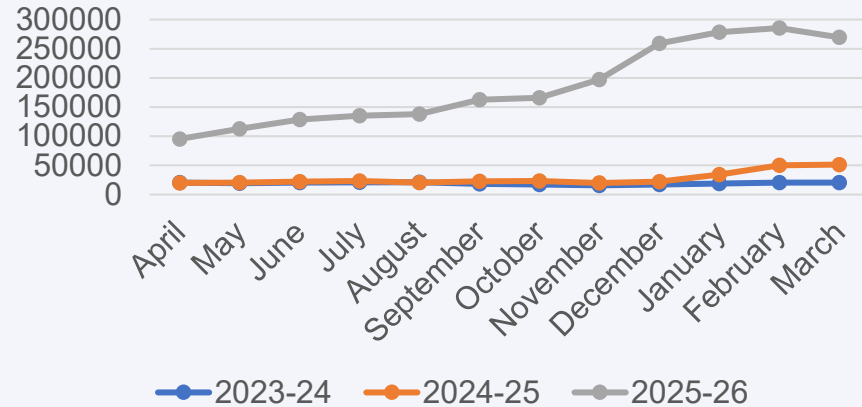
- ❑ The chart shows the monthly trend of total employee strength
- ❑ A consistent upward trend is observed over the period
- ❑ Indicates organizational expansion and workforce growth
- ❑ Reflects structured and planned hiring approach
- ❑ Minor fluctuations in some months are normal and may be due to:
 - ❑ Project completion
 - ❑ Resource reallocation
 - ❑ Hiring cycles
- ❑ Overall trend remains positive and stable
- ❑ Demonstrates effective manpower planning and sustained business growth

This trend reflects the organization’s steady growth and strong workforce planning strategy.

Monthly Employee Count



EPF Growth & Employee Coverage

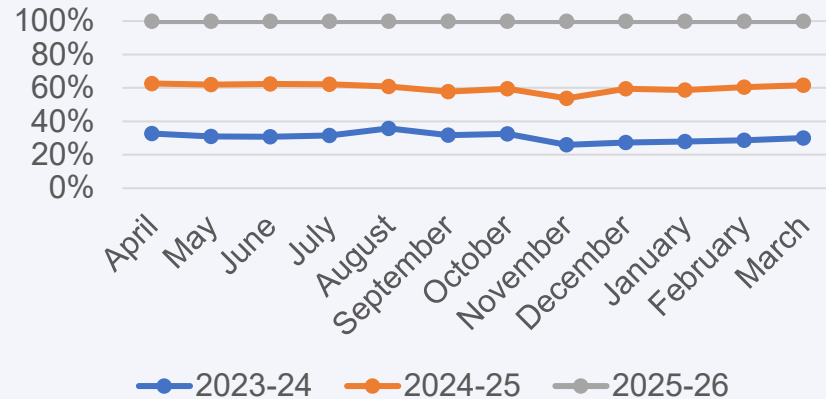


EPF Growth & Employee Coverage

- ❑ EPF contributions have shown a consistent upward trend over the last 3 financial years
- ❑ Significant increase observed in FY 2024–25 and FY 2025–26 compared to FY 2023–24
- ❑ Growth indicates higher number of employees covered under EPF
- ❑ Reflects our efforts in activating PF accounts for employees across locations
- ❑ Demonstrates improved statutory compliance and process standardization
- ❑ Strengthens our commitment towards employee welfare and financial security

This overall growth reflects our proactive approach in expanding employee benefits and ensuring compliance across the organization.

Professional Tax Trend Analysis

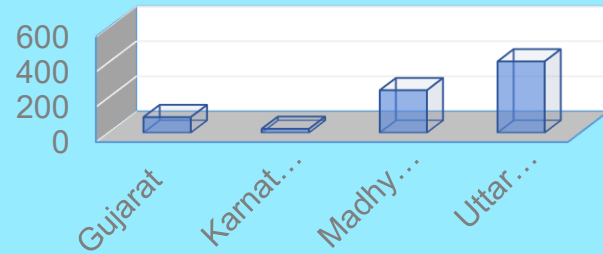


Professional Tax Trend Analysis

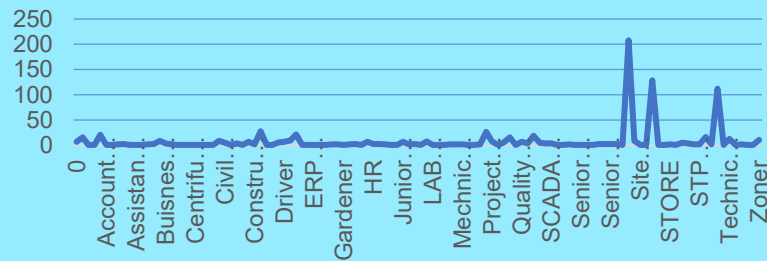
- ❑ Professional Tax collection shows an overall increasing trend over the last 3 years
- ❑ FY 2025–26 recorded the highest total at ₹0.47 Mn, compared to ₹0.36 Mn (2023–24) and ₹0.35 Mn (2024–25)
- ❑ Noticeable growth in monthly contributions from October onwards in FY 2025–26
- ❑ Increase indicates higher employee count and improved payroll coverage
- ❑ FY 2024–25 shows slight fluctuation, but overall remains stable and consistent
- ❑ Significant rise in FY 2025–26 reflects better compliance and accurate deduction processing
- ❑ Demonstrates stronger payroll management and statutory adherence

The upward trend in Professional Tax reflects improved employee coverage, stronger compliance, and enhanced payroll efficiency across the organization.

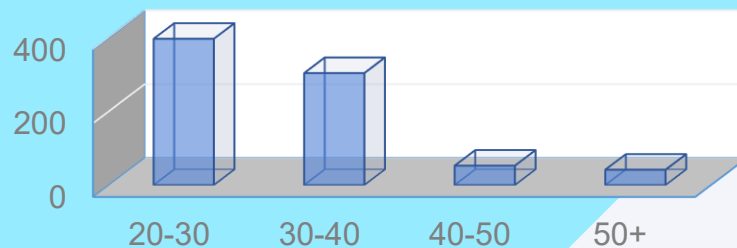
State-wise Employee Distribution



Position-wise Employee Count



Age-wise Employee Distribution



State-wise Employee Distribution

- ❑ Shows employee distribution across different states
- ❑ Highest concentration in Uttar Pradesh, followed by Madhya Pradesh
- ❑ Indicates these regions are primary operational hubs
- ❑ Gujarat shows moderate presence (ongoing + upcoming projects)
- ❑ Karnataka has lower employee count due to project completion
- ❑ Workforce distribution is aligned with project lifecycle stages
- ❑ Ensures efficient resource utilization and operational flexibility

This distribution reflects our strategic manpower planning aligned with project requirements across regions

Position-wise Employee Count

- ❑ Shows distribution of employees across different job positions
- ❑ Highlights workforce allocation across roles and functions
- ❑ Higher count in certain roles indicates core operational importance
- ❑ Lower count in support roles reflects a balanced organizational structure
- ❑ Helps in understanding workforce distribution patterns
- ❑ Supports future hiring and resource planning decisions

This distribution ensures a balanced structure while supporting efficient operations and future growth.

Age-wise Employee Distribution

- ❑ Shows distribution of employees across different age groups
- ❑ Majority of workforce is in 20–30 age group
- ❑ Followed by 30–40 age group, indicating a young workforce
- ❑ Presence of 40–50 and 50+ groups adds experience and stability
- ❑ Reflects a balanced mix of young talent and experienced professionals
- ❑ Supports innovation, productivity, and operational efficiency

This balanced age mix strengthens both agility and long-term organizational capability.



EFFIL WATER INFRA



BUILDING INFRASTRUCTURE
FOR EARTH'S WATER SECURITY

COMPLETED PROJECTS



COMPLETED PROJECTS



GIFT Sez Ltd., (Gandhinagar)

Envisioned by the Hon'ble Prime Minister Shri Narendra Modi, the GIFT City initiative represents a flagship vision to create a global hub for financial and IT enterprises. The organization contributed to this landmark project through the execution of storm water and sewerage infrastructure, including the laying of RCC pipelines (450 mm–1,200 mm diameter) totaling approximately 2,300 running meters. All works were carried out in highest strict compliance with GIFT City's technical and regulatory standards, supporting the development of a modern, resilient, and sustainable urban ecosystem.



WASMO (Subsidiary of GWSS. Board)

EWIL is a key contributor to the Hon'ble Prime Minister's 'Nal Se Jal' initiative, executing the largest single-bidder contractor in Gujarat under the program across 53 villages in the districts of Dahod, Valsad, Arvalli, and Godhra. The scope includes the introduction of solar EPC-powered borewells, promoting energy efficiency and sustainability. Under this project, approximately 1,381 km of pipeline, ESRs & Sumps has been laid and over 45,180 Functional Household Tap Connections (FHTCs) have been provided, ensuring reliable potable water supply and significantly improving the quality of life for local communities.



COMPLETED PROJECTS



Hubli Dharwad

1 & 3 MLD STP based on Phytotide Technology

- The technology treats sewage through pressure sand filters, activated carbon, and ozonation, directing it to an aesthetically pleasing pond that serves as a walking track.
- This process reduces electricity use, minimizes maintenance, and eliminates costly equipment like blowers and centrifuges.

0.25 MLD STP based on MBBR Technology

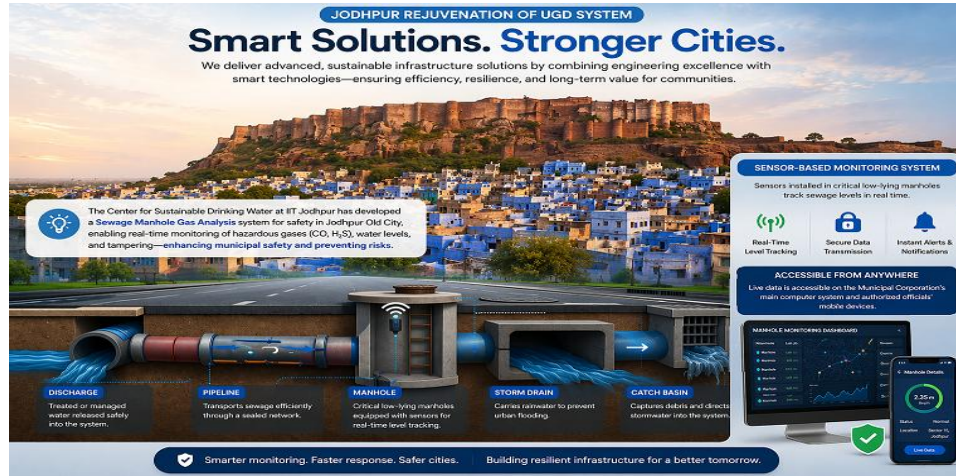
- The Dissolved Air Flotation (DAF) system significantly advances Sewage Treatment by efficiently removing oil and grease.
- It is followed by Tertiary Treatment by introducing Tube settles and Pressure Sand Filters & Activated Carbon Filters.

10 MLD STP based on SBR (Sequential Batch Reactor) Technology

- This is a proven and well accepted technology to treat the any higher BOD / COD Effluents to less than 10 BOD. This is accepted by National Green Tribunal (NGT). The Parameters designed by CPHEEO.



COMPLETED PROJECTS



Jodhpur

Under Municipal Corporation Jodhpur

EWIL has implemented a sensor-based monitoring system for critical low-lying manholes. This system allows real-time level tracking and is accessible from both the Municipal Corporation's main computer and authorized officials' mobile devices.

- Timely sewer cleaning
- lowers operational costs
- Real-time alerts reduce response delays
- IoT sensors monitor manhole water levels
- Early issue detection prevents disease outbreaks
- AI-based monitoring improves civic safety
- Faster maintenance improves efficiency and reliability

Bijapur

- Eligible for Bonus as per Tender Clause GCC 47.
- Completed Tender Scope of Work within 17 months, before the completion period.
- 46.9 Kms of Network and Rehabilitation of old existing sewerage system is proposed to be completed in 24 Months and the same has completed by us earlier



COMPLETED PROJECTS



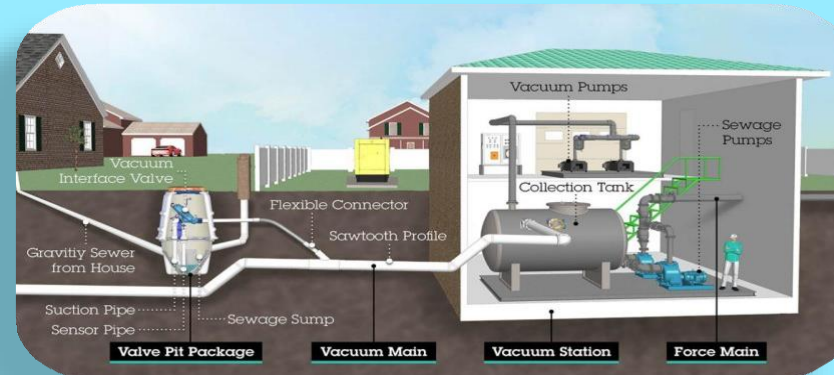
First City In The Country To Have Vacuum-based Sewers Awarded By President Of India

Agra Smart City Ltd., Agra

Following the QUA-VAC Vacuum system design, a vacuum-based sewer system has been successfully implemented near the Taj Mahal, with a Vacuum Station established in the Taj Ganj Area of Agra. This approach effectively addresses challenges where conventional sewer systems are not feasible.

In the low-lying Taj Ganj Area, a vacuum-based sewer system has been implemented, featuring 112 sensor-equipped chambers.

This advanced system automatically generates alerts for blockages or malfunctions and offers remote operation capabilities from anywhere in the world.



COMPLETED PROJECTS



UP, Jal Nigam, Gorakhpur

A strategic proposal is underway to develop a 10 km drainage channel, with a width of up to 20 meters, flanked by 10-meter-wide roads on both sides. The project includes provisions for high mesh structures on the drain walls, ensuring a comprehensive approach.

The area around Gordhaiya Nala is set for development under the GOMTI RIVER FRONT PROJECT, with an estimated budget of around one thousand crore rupees, including approximately seven hundred crore rupees for land acquisition for the drain.

Benefits Of The Project

Environmental
Improvement

Public
Health

Flood
Prevention

Urban
Aesthetics
and
Livability

Community
Engagement



BUILDING INFRASTRUCTURE
FOR EARTH'S WATER SECURITY

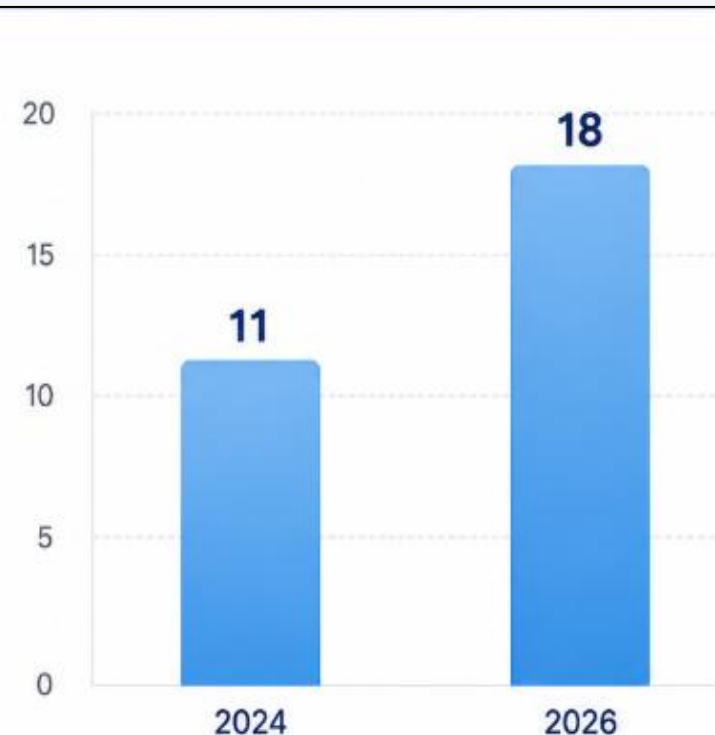
OPPORTUNITY IN INDIAN WATER &
WASTE WATER TREATMENT INDUSTRY



Indian Water And Wastewater Treatment Industry



INDUSTRY SIZE (USD BN)



CAGR (2024–2026)

27%+

Key Growth Factors



Water Scarcity

India has 18% of the world's population but only 4% of the world's water sources.



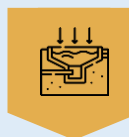
Growing Population

India's rapid urban population growth is leading to more wastewater production and putting strain on existing infrastructure



Government Initiatives

India has several national initiatives, such as the Jal Jeevan Mission, AMRUT, and the National Mission for Clean Ganga (NMCG)



Water Treatment Technology

Advancements in water treatment technology are offering promising opportunities

GOVERNMENT RECOGNITION

Project Details

PROGRAMME

AMRUT 2.0

LOCATION

Gorakhpur, UP

TOTAL COST

₹495 Crore+

SCOPE

Nala Channelization
& Lake Rejuvenation

INSPECTION

15 May 2026

AMRUT 2.0

Atal Mission for Rejuvenation
and Urban Transformation

Site Inspection

by Chief Minister, Uttar Pradesh



Channelization of Goidhdhiya Nala & Rejuvenation of Ramgarh Taal —
Interception, Diversion & Treatment

₹495 Cr+

Project Value

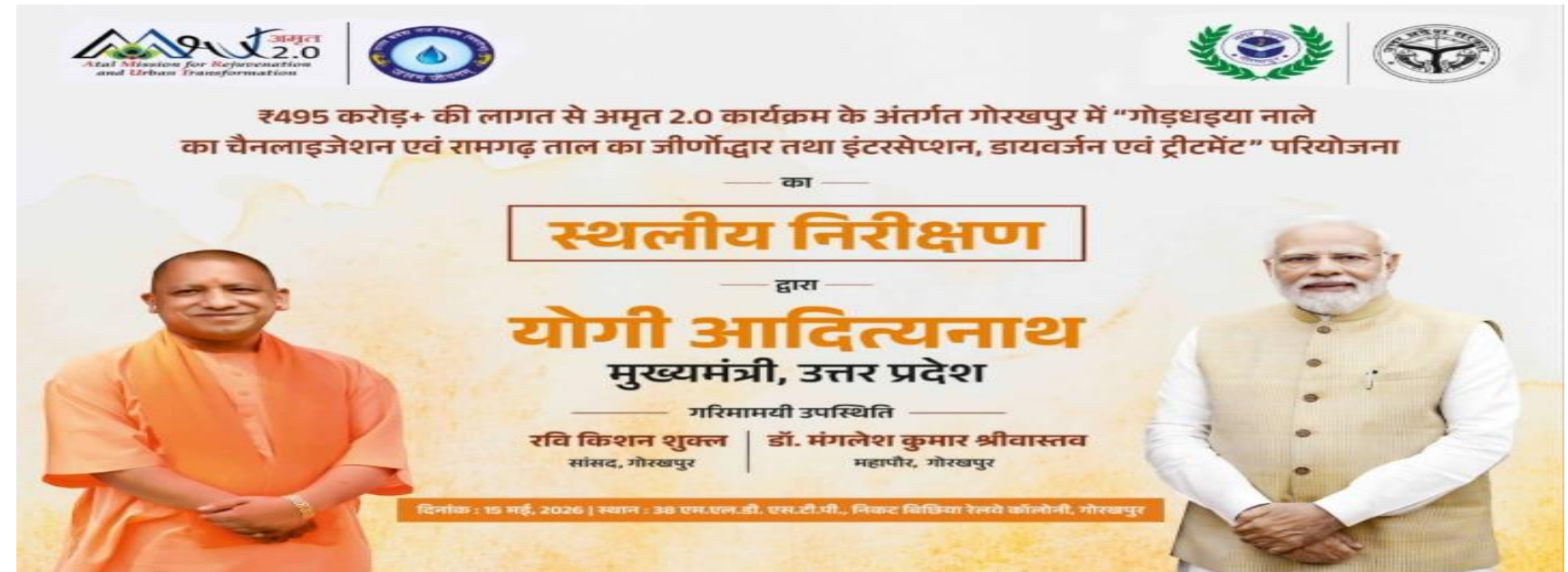
AMRUT 2.0

Programme

Gorakhpur

Location

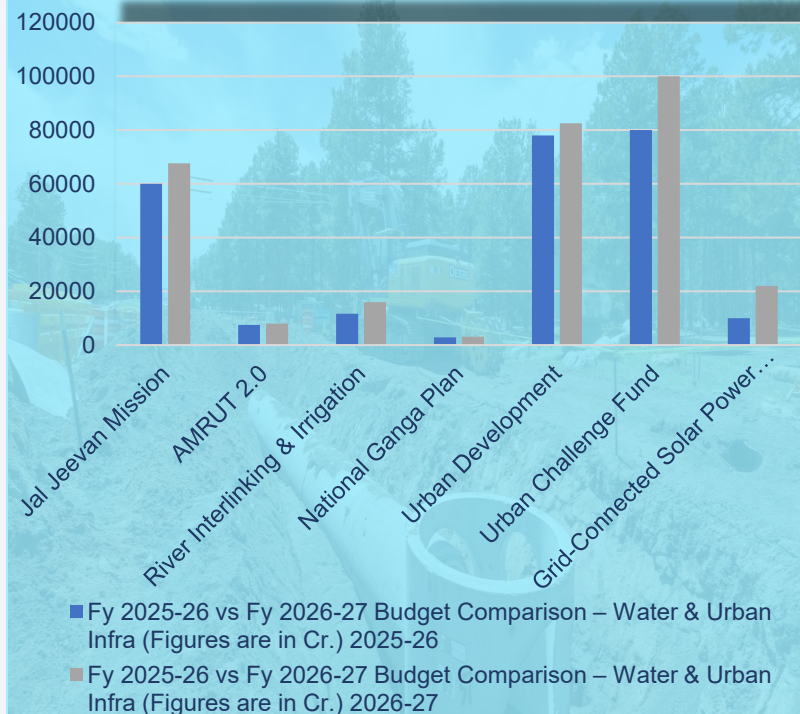
Event Reference Photo



Site inspected on 15 May 2026 — 38 MLDs TP, Nikar Bikhiya Railway Colony, Gorakhpur

Key Union Budget 2026-27: A Watershed Moment

**Fy 2025-26 vs Fy 2026-27 Budget Comparison
Water & Urban Infra**



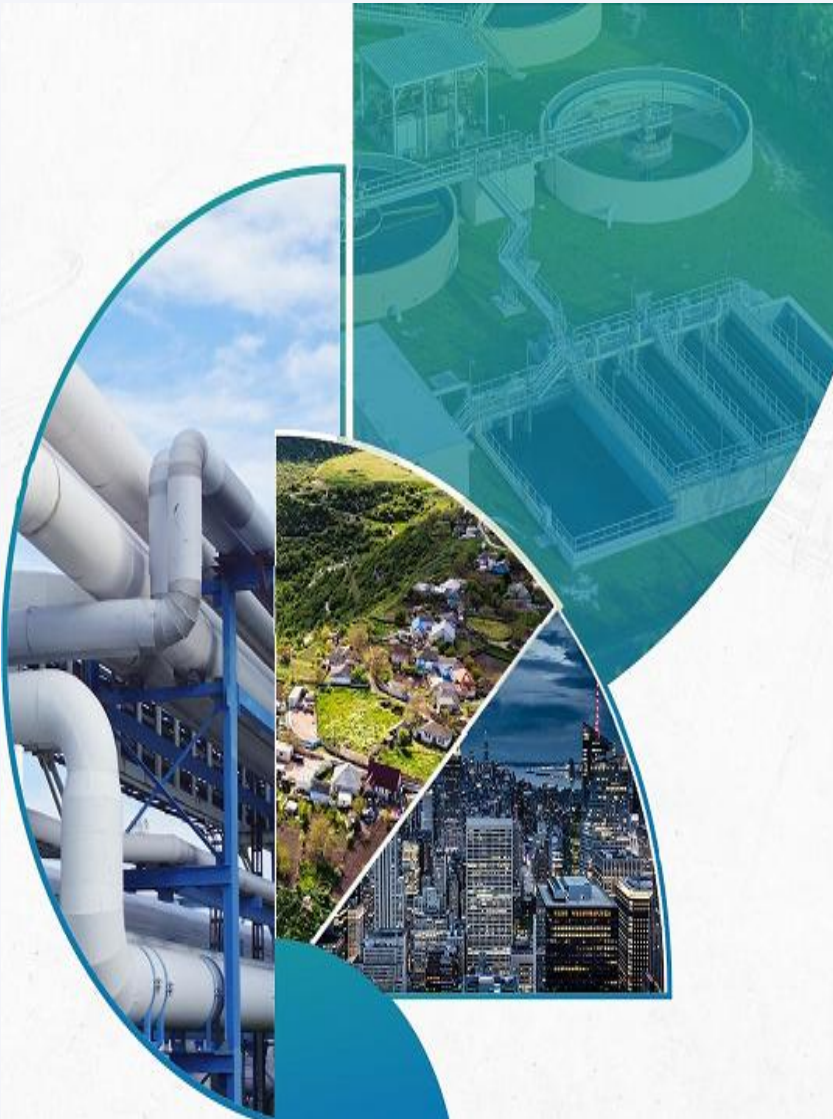
- Strong increase in water & urban infra spending
- Focus on sustainable and smart infrastructure
- Positive outlook for infra & EPC companies



Fy 2025-26 vs Fy 2026-27 Budget Comparison – Water & Urban Infra (Figures are in Cr.)

Gov. Program	2025-26	2026-27
Jal Jeevan Mission	60000	67670
AMRUT 2.0	7500	8000
River Interlinking & Irrigation	11707	16013.13
National Ganga Plan	2800	3100
Urban Development	78000	82570
Urban Challenge Fund	80000	100000
Grid-Connected Solar EPC Power Development	10000	22000

Charting the Course: India's Water Infrastructure Revolution



Record Capex

₹ 12.2 lakh crore allocated to infrastructure – a historic high signaling unwavering government commitment to nation - building.

Water Infra Upscale

Substantial 37% rise in the Gov. budget for River Interlinking & Irrigation projects signals produces substantial opportunities for irrigation sector.



Multimodal Connectivity

₹ 5.98 lakh crore for transport and logistics, prioritizing inland waterways – directly accelerating water infrastructure execution

Urban Development

City Economic regions(CERs) funding will drive integrated water and sanitation demand across Tier II and Tier III cities

Indian Government Schemes



Jal Jeevan Mission

Outlay: ₹3.6 Lakh Crore



Swachh Bharat Mission

Outlay: ₹1.41 Lakh Crore



Atal Bhujal Yojana

Outlay: ₹6,000 Crore



Pradhan Mantri Krishi Sinchayee Yojana

Outlay: ₹50,000 Crore



Namami Gange Programme

Outlay: ₹20,000 crore



AMRUT 2.0

Outlay: 2.99 Lakh Crore

Atal Mission for Rejuvenation and Urban Transformation (AMRUT 2.0)



- The AMRUT 2.0 guidelines aim to assist States/UTs in making cities Aatma Nirbhar and "water secure."
- Extensive stakeholder consultations across 36 States/UTs included input from development banks, private sector players, water consultancies, and NGOs.

500

AMRUT Cities

4800

Statutory Towns
to receive water coverage

20%

City Water Demand
met from recycled water

40%

Industrial Water Demand
met from recycled water

Swachh Bharat Mission



The Swachh Bharat Abhiyan is the most significant cleanliness campaign by the Government of India. Initiated on 2 October 2014, it aims to eliminate open defecation and improve solid waste management across the nation.

600 Mn+

people gained access to toilets

600K+

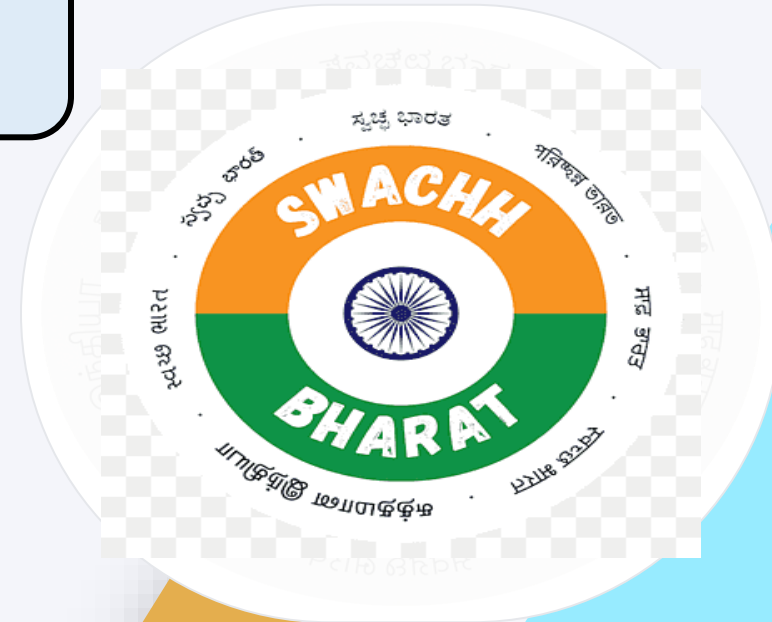
Villages achieved ODF status

250K+

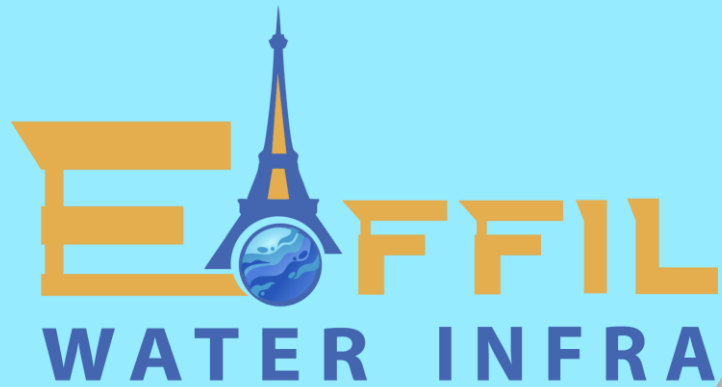
Villages with improved waste management

300K+

villages with greywater systems



THANK YOU



CONTACT US



416-417, Platinum Plaza,
Opp. Kunj Mall, Nikol Naroda Road
Ahmedabad - 382350



Phone: 079 3533 2985
Email: info@eiffilwaterinfra.com
Website: www.eifiwaterinfra.com